

TOTALVIEW WORKBENCH



VERSION 1.0.0



Copyright © 2007 by TotalView Technologies. All rights reserved

Copyright © 1998–2007 by Etnus LLC. All rights reserved.

Copyright © 1996–1998 by Dolphin Interconnect Solutions, Inc.

Copyright © 1993–1996 by BBN Systems and Technologies, a division of BBN Corporation.

No part of this publication may be reproduced, stored in a retrieval system, or transmitted, in any form or by any means, electronic, mechanical, photocopying, recording, or otherwise without the prior written permission of TotalView Technologies.

Use, duplication, or disclosure by the Government is subject to restrictions as set forth in subparagraph (c)(1)(ii) of the Rights in Technical Data and Computer Software clause at DFARS 252.227-7013.

TotalView Technologies has prepared this manual for the exclusive use of its customers, personnel, and licensees. The information in this manual is subject to change without notice, and should not be construed as a commitment by TotalView Technologies. TotalView Technologies assumes no responsibility for any errors that appear in this document.

TotalView and TotalView Technologies are registered trademarks of TotalView Technologies. TVD is a trademark of TotalView Technologies.

TotalView Debugger uses a modified version of the Microline widget library. Under the terms of its license, you are entitled to use these modifications. The source code is available at <http://www.totalviewtech.com/Products/TotalView/developers>.

All other brand names are the trademarks of their respective holders.

Contents



TotalView Workbench

Overview	1
Workbench Configuration	1
Using the Workbench	1
Adding Your Own Tools	2
Installation	2
Installing the JRE	2
Installing the Workbench	2
Configuring the Workbench	3
Using the Workbench	4
Launching Products	5
Recent Debugging Sessions	5
News and Tips	5
Other Links	5
Adding Your Own Tools	5



Overview

Welcome to the TotalView Technologies Workbench. You will be using the Workbench to launch our products. In addition, you can add your own applications so that they too can be launched from within the Workbench. In addition to providing an easy way to launch products, the Workbench also provides links to documentation, support, news, and tips.

Explore the following topics to learn how to configure and use the Workbench as well as add and launch other programs from within it.

If you have problems using the Workbench or if you have ideas on how we can improve the Workbench, please don't hesitate to contact support.

Workbench Configuration

The Workbench locates the TotalView Technologies products that it can launch by scanning the default Workbench and any user-specified installation locations. You can name these locations and as well as select other Workbench preferences by using the Workbench **File > Preferences** dialog box. More information is contained within "*Configuring the Workbench*" on page 3.

Using the Workbench

The Workbench provides a convenient, centralized location to run all of your TotalView Technologies products. It also lets you resume previous debugging sessions.

Read more in "*Using the Workbench*" on page 4.

Adding Your Own Tools

The Workbench knows how to discover TotalView Technologies products. It can also launch tools that are named in configuration files. For more information, see “*Adding Your Own Tools*” on page 5.

Installation

Installing the JRE

If you do not have the JRE on your system, you will need to install the JRE. You can obtain a copy by going to <http://www.java.com/> and clicking the **Free Java Download** button.

After you install the JRE, be sure to set your `JAVA_HOME` variable. For example, if you installed it in `/home/my_directory`, you would set `JAVA_HOME` to `/home/my_directory/jre1.6.0_03` (or whatever version you’ve installed).

Installing the Workbench

- 1 Untar the file you downloaded.
- 2 Execute the **Install** command; for example, `./Install`. You may want to be root while you’re installing the Workbench, but you don’t need to. The program then gives instructions and asks questions.
- 3 Enter the name of the directory into which you’ll be installing the Workbench. The default is `/usr`.
- 4 You are then asked if **Install** should unzip a file. Answer **yes**.
If you were installing in `/usr`, the Workbench is installed within `/usr/toolworks/wbmanager.<version>`.

If your `JAVA_HOME` variable is set, change to the directory containing the Workbench and start it. For example:

```
cd /usr/toolworks/wbmanager.1.0.0-0/bin
./tvmanager &
```

You should, of course, add the location of the Workbench to your `PATH` variable.

If this `toolworks` directory is different than the `toolworks` directory in which either TotalView Debugger or MemoryScape are installed, you will need to name these locations in **TotalView product Install locations** preference. (See “*Configuring the Workbench*” on page 3 for more information.) Here are two things you should know:

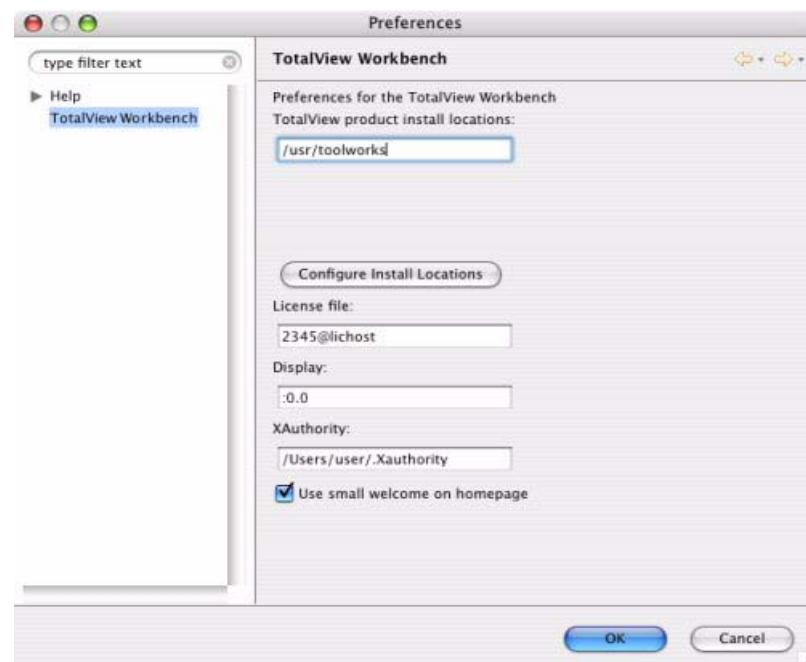
- When you set this preference, set it to a `toolworks` directory, not to the `bin` directory in which TotalView Debugger or MemoryScape reside.

- If you have more than one **toolworks** directory, separate them with colons (":").

Configuring the Workbench

The Workbench is configured by using the **Preferences** dialog box, which you access by selecting the **File > Preferences** command. (See Figure 1 on page 3.)

Figure 1: Preferences Dialog Box



Use this dialog box to modify the following preferences:

- **TotalView product install locations**

Typically, the Workbench is installed within a **toolworks** directory as are other TotalView products. The Workbench automatically discovers TotalView products within this directory.

If there are other locations where TotalView products are installed, you can enter a colon separated list of paths here. The Workbench will then search these directories looking for TotalView products. The Workbench does not traverse down directory paths; instead, it only looks one level down for TotalView products.

The path you name should point to the **toolworks** directory.

- **License file**

The Workbench reads the value of the `LM_LICENSE_FILE` environment variable and adds it to the environment when it launches products.

Change this preference to name which license file or server TotalView products should use.

■ Display

The Workbench reads the value of the DISPLAY environment variable and adds it to the environment when it launches products. Change this preference to define where the products display.

■ XAuthority

The Workbench reads the value of the XAUTHORITY environment variable and add it to the environment when it launches products. Change this preference to define the value used when the product launches.

■ Use small welcome on homepage

You can reduce the size of the Workbench welcome message by checking this preference.

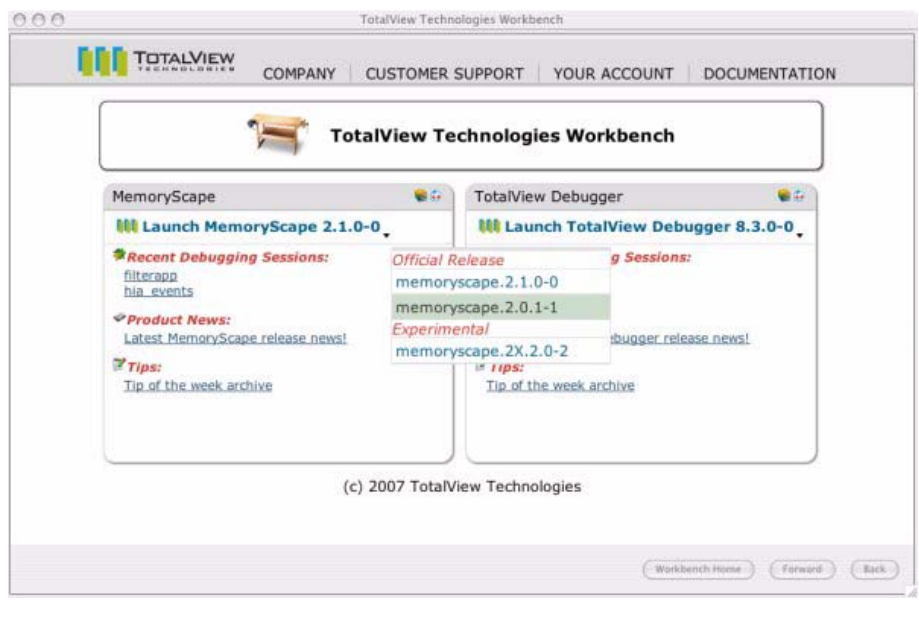
Click **OK** to accept the changes you made or **Cancel** to cancel any changes. Preferences persist between sessions so you do not need to reenter them when you restart the Workbench.

After you press **OK**, the Workbench refreshes so that it uses your new settings.

Using the Workbench

During startup, the Workbench locates TotalView Technologies products by searching the Workbench installation location and any search paths set in the Totalview product install locations preference.

Figure 2: Workbench Manager



As this figure shows, the Workbench constructs MemoryScape and TotalView Debugger lists for each.

The Workbench uses browser technology, so selecting links and navigating between pages should feel natural. As with a browser, you can navigate to a previous page using the **Back** button located at the bottom of the Workbench window or, if you have already used the **Back** button, clicking the **Forward** button, returns you to that previously viewed page. You can quickly return to the main Workbench page by clicking **Workbench Home**.

Launching Products

Launching a product is as simple: just click on the *Launch* product link. The Workbench then executes the most recent version of the product. If the Workbench discovers multiple versions of a product, it displays a menu of these versions when you place your mouse over the small black triangle next to the Launch product link. Versions are grouped according to their type of release and you can launch any version by clicking on the version link.

Recent Debugging Sessions

The Workbench can retrieve the most recent debugging sessions performed using TotalView products. If it finds previous debugging sessions, they are shown within the **Recent Debugging Sessions** area. Click on a link to launch your program using the most recent version of the product.

News and Tips

To read the latest news or find handy tips, click on the links under **Product News** or **Tips**. These links lead directly to pages on the TotalView Technologies web site.

Other Links

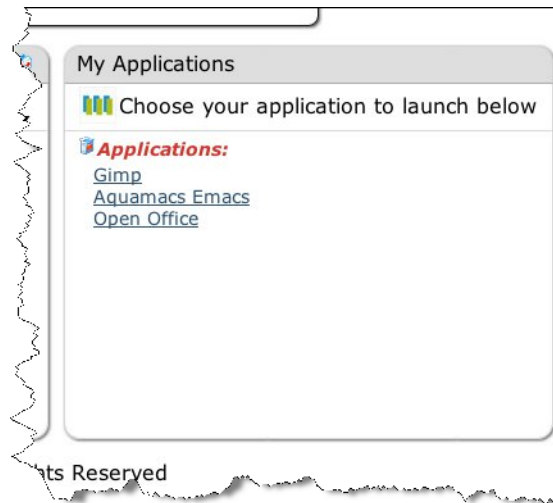
Since the Workbench is built around browser technology, links to company resources and documentation naturally fit in to the use of the Workbench. At the top of the Workbench screen are a series of links. These links allow you to easily access the TotalView Technologies web site, customer support, your customer portal account, and product documentation.

Adding Your Own Tools

The Workbench lets you launch the TotalView Technologies products that it locates. You can also add configuration files that define third-party applica-

tions that can be launched from the Workbench. The following snapshot shows launchers for Gimp, Aquamacs Emacs, and OpenOffice.org.

Figure 3: Application Launchers



These configuration files contain XML data that describes the name of the program, where it is run from, and any program startup arguments. Each program to be launched using the Workbench is described within its own configuration file. Configuration files are stored in the **toolworks/Workbench.<version>/<platform>thirdparty** directory.

An example configuration file, **Example.xml**, is provided as a template in the configuration directory.

```
<?xml version="1.0" encoding="UTF-8"?>
<guests>
  <!-- Do not use trailing slashes on directory paths -->
  <product name="PROGRAM_NAME"
    description="PROGRAM_DESCRIPTION">
    <install-location>PROGRAM_INSTALL_PATH</install-location>
    <executable>PROGRAM_EXECUTABLE</executable>
    <parameter-list>PROGRAM_ARGUMENTS</parameter-list>
  </product>
</guests>
```

To define a third-party product to be launched from the Workbench, copy **Example.xml** giving it a unique name and saving it within the configuration directory. Edit the file and provide values for the following tags:

PROGRAM_NAME--required

The program's display name.

PROGRAM_DESCRIPTION--required

A description of the program that is used for its tool tip.

PROGRAM_INSTALL_PATH--required

The full path to the program. Do not include the executable's name.

PROGRAM_EXECUTABLE--required

The executable name of the program.

PROGRAM_ARGUMENTS--optional

An optional list of arguments that the Workbench will add to the command line when it launches the program.

Once the file is placed in the **thirdparty** configuration directory, the Workbench reads the file either when it is either restarted or you press the Workbench Home button, which refreshes the Workbench configuration.

The following configuration file runs Gimp on Mac OS X. It is saved in the **thirdparty** directory within the darwin-x86 directory.

```
<?xml version="1.0" encoding="UTF-8"?>
<guests>
<!-- Do not use trailing slashes on directory paths -->
  <product name="Gimp" description="Graphics Editor">
    <install-location>/Applications/GIMP.app/Contents/MacOS
    </install-location>
    <executable>Gimp</executable>
    <parameter-list></parameter-list>
  </product>
</guests>
```

